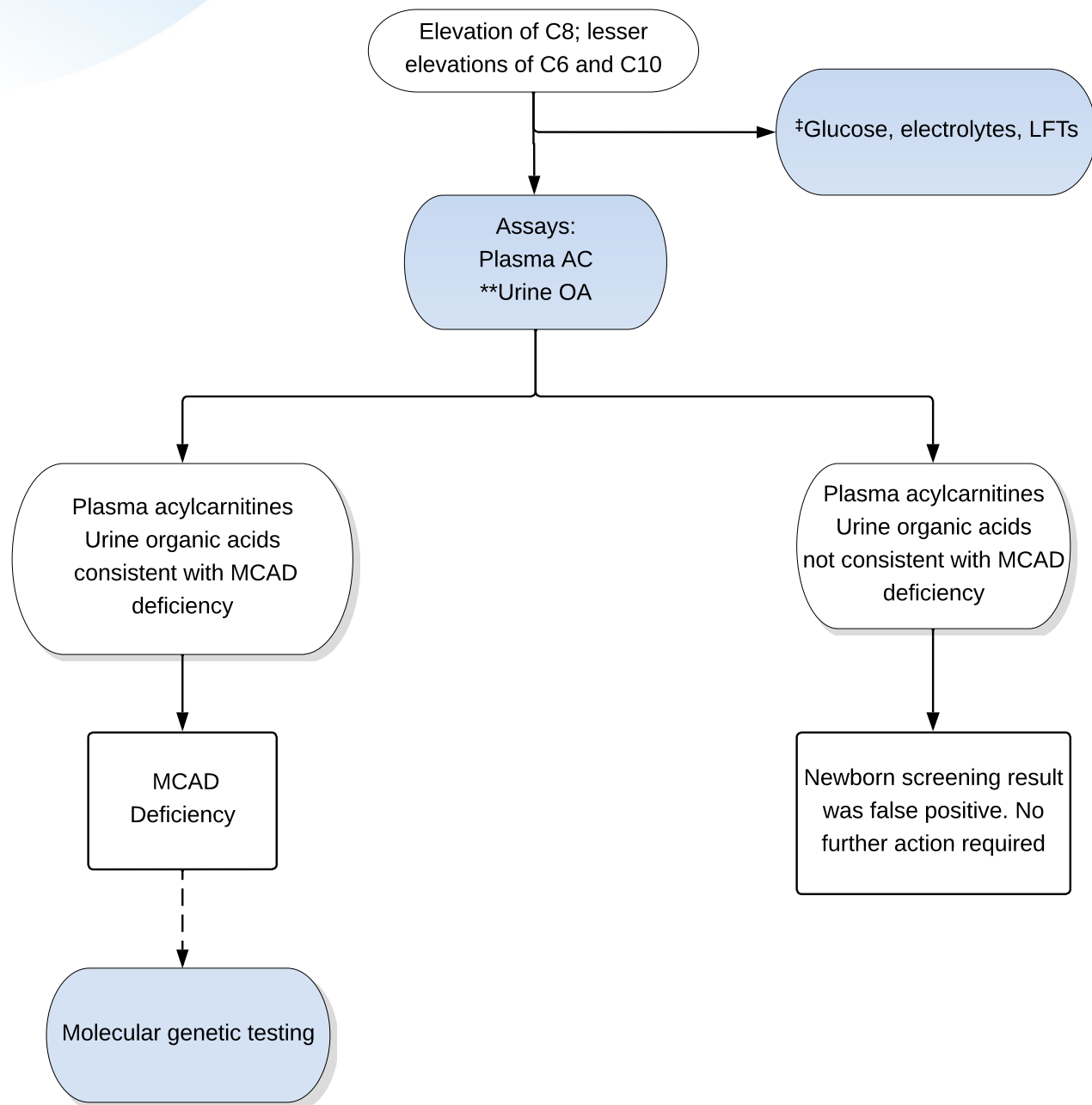


C8 Elevated + Lesser Elevations of C6 and C10*



Key

- Actions are shown in shaded ovals; results are in the unshaded ovals. Diagnostic outcomes in boxes.
- Dashed line reflects an optional test.
- ‡May be performed locally as a rapid screen to assess severity.
- *C6 and C10 if reported.
- **OA must include identification of hexanoylglycine.

Abbreviations

- AC = acylcarnitine
- LFTs = liver function tests
- MCAD = Medium-chain acyl-CoA dehydrogenase
- OA = organic acid