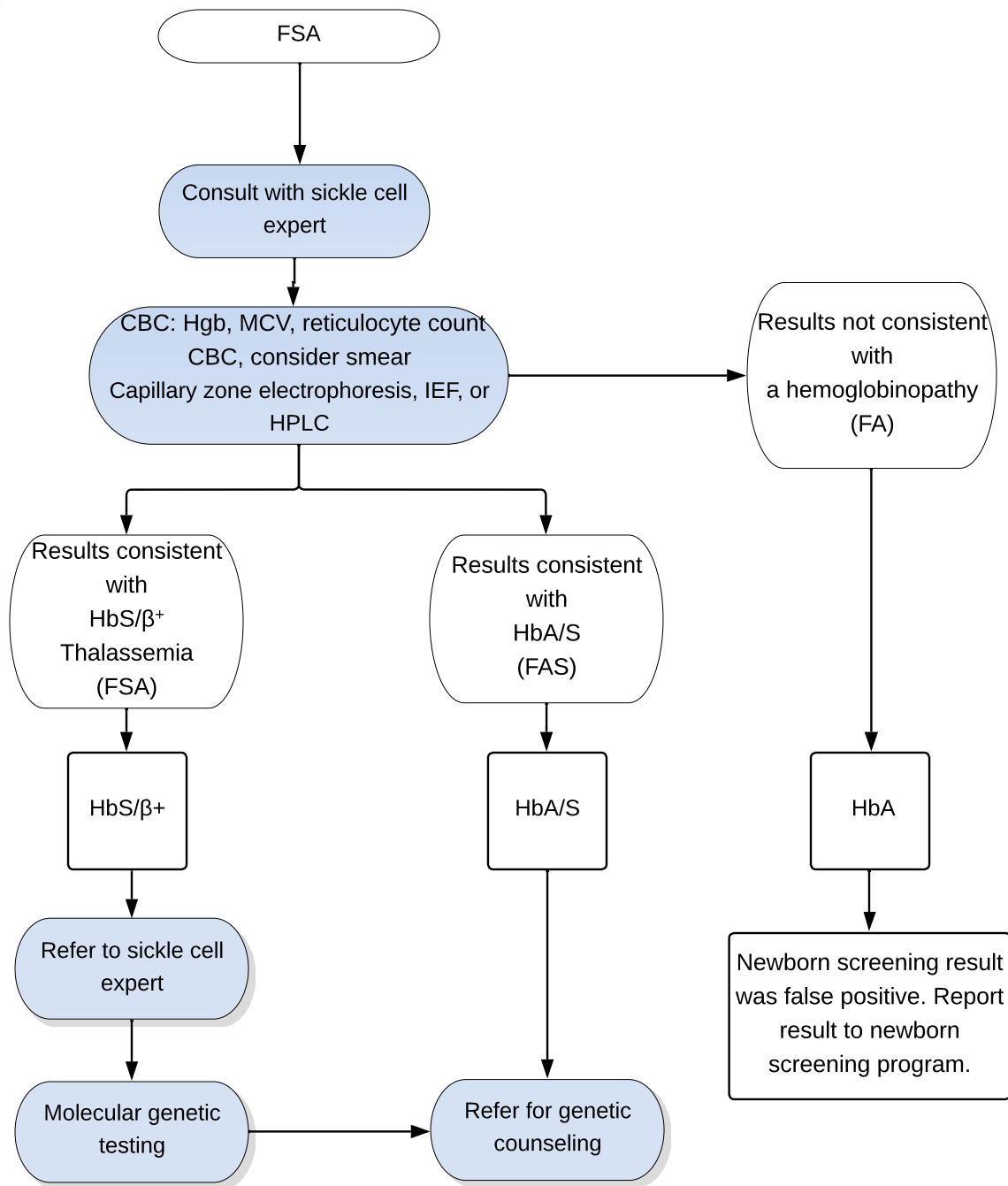


FSA: Hemoglobin HbS/B⁺ Screening Result



Key

- Actions are shown in shaded ovals; results are in the unshaded ovals.
- Diagnostic outcomes are shown in boxes.

Abbreviations

β = beta
 CBC = complete blood count
 Hb = hemoglobin protein
 Hgb = hemoglobin level
 HPLC = high performance liquid chromatography
 IEF = isoelectric focusing
 MCV = mean corpuscular volume