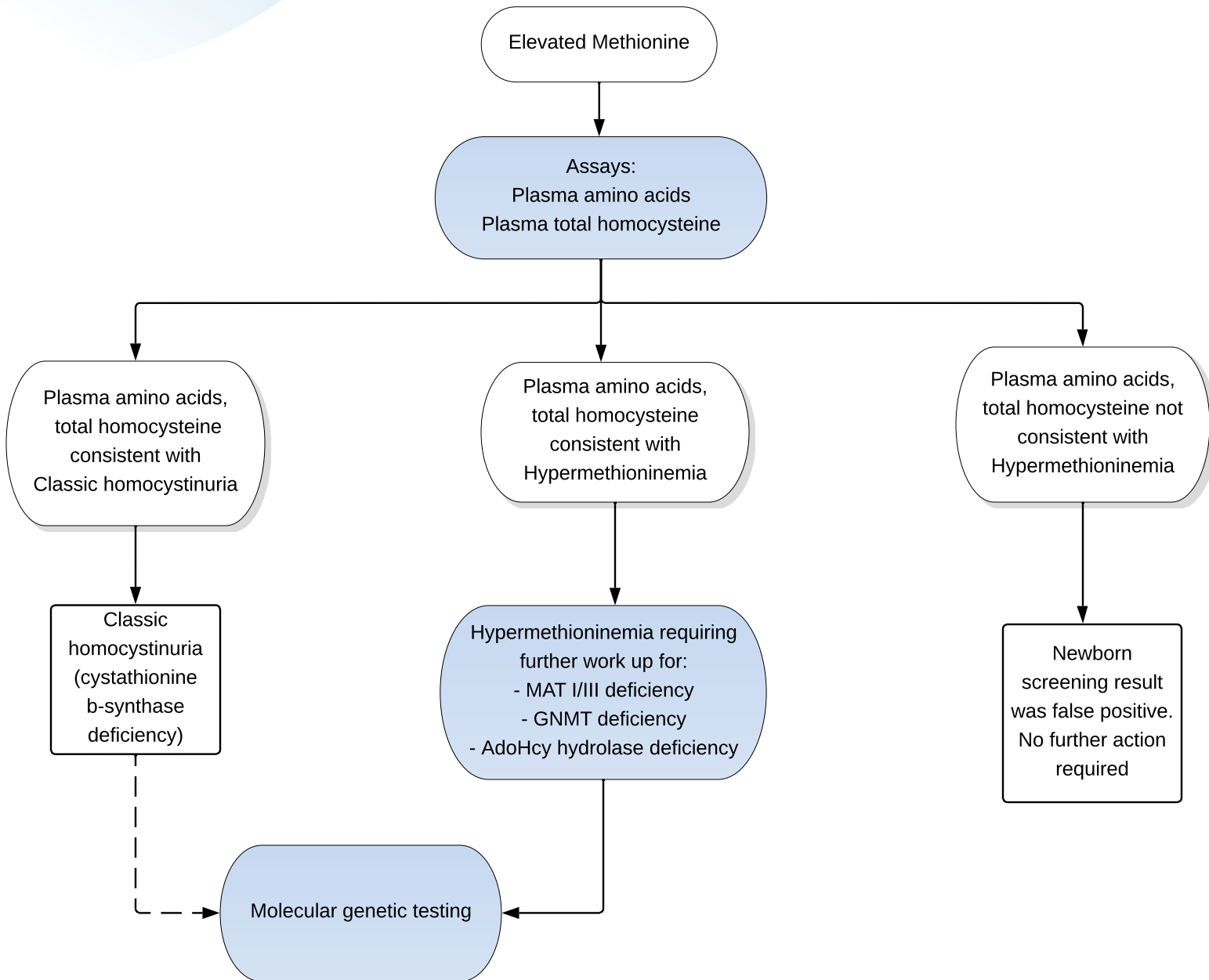


**Reaffirmed**  
**February, 2026**

## Elevated Methionine +/- Elevated Homocysteine



### Key

- Actions are shown in shaded ovals; results are in the unshaded ovals
- Diagnostic outcomes are shown in boxes.
- Dashed line reflects an optional test.

### Abbreviations:

AdoHcy hydrolase = Adenosylhomocysteine hydrolase  
 GNMT = glycine N-methyltransferase  
 MAT = Methyladenosyltransferase