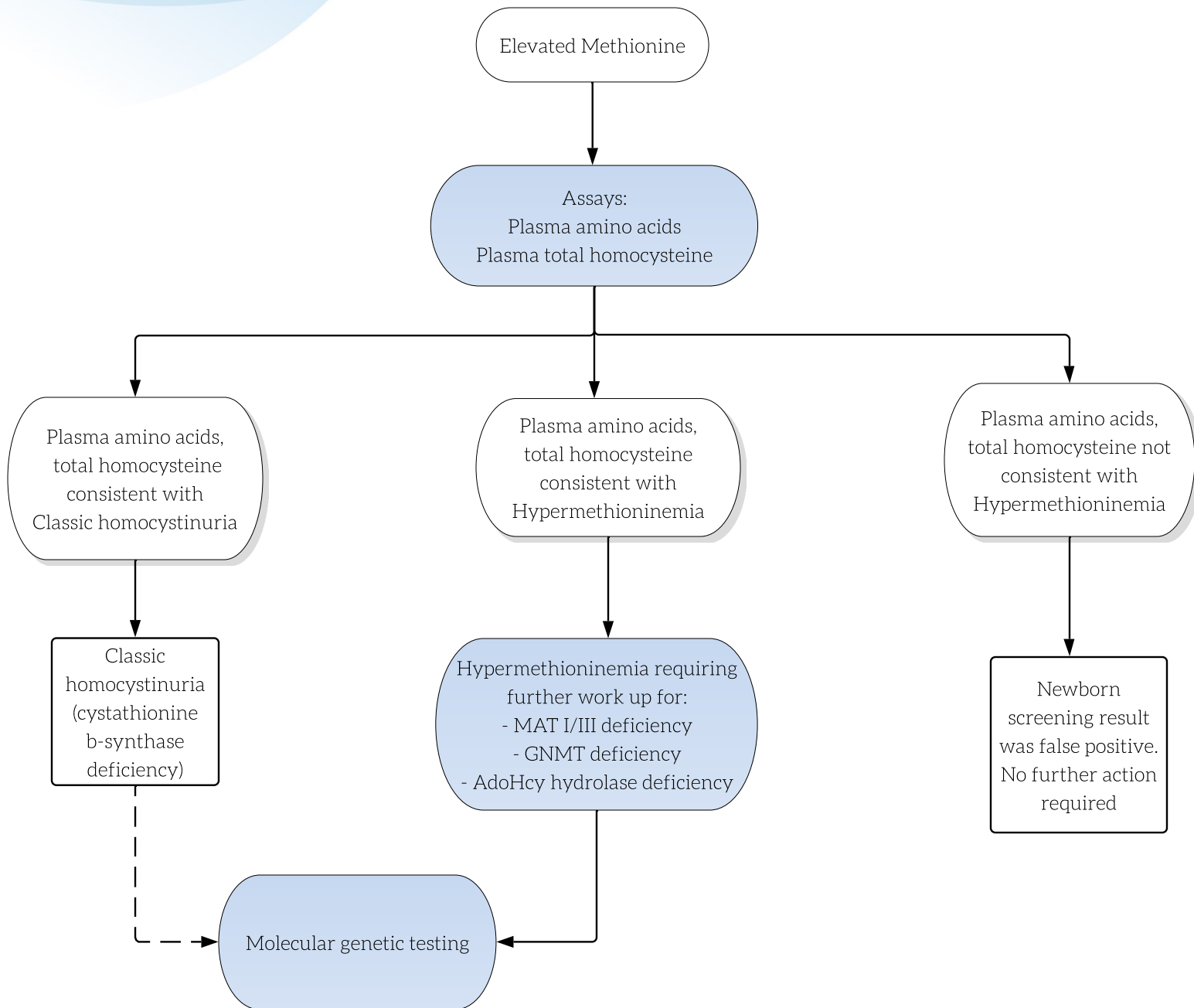


Elevated Methionine +/- Elevated Homocysteine



Key

- Actions are shown in shaded ovals; results are in the unshaded ovals
- Diagnostic outcomes are shown in boxes.
- Dashed line reflects an optional test.

Abbreviations:

AdoHcy hydrolase = Adenosylhomocysteine hydrolase
GNMT = glycine N-methyltransferase
MAT = Methyladenosyltransferase