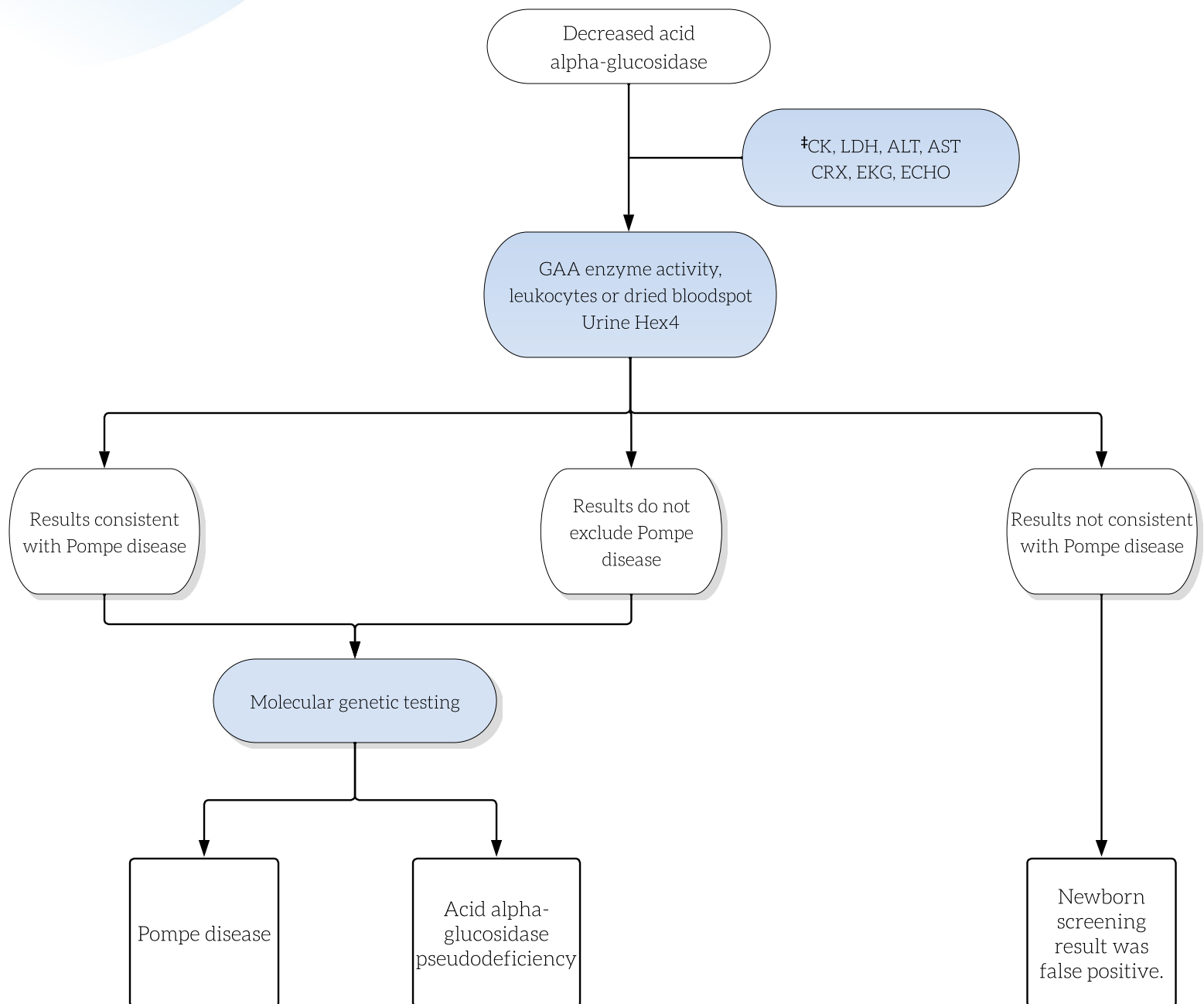


Pompe disease: acid alpha-glucosidase deficiency



Key

- Actions are shown in shaded ovals; results are in the unshaded ovals. Diagnostic outcomes are shown in boxes.
- *May be performed locally as a rapid screen to assess severity.

Abbreviations

ALT = alanine transaminase
 AST = aspartate transaminase
 CK = creatine kinase
 CXR= chest x-ray
 ECHO = echocardiogram
 EKG = electrocardiogram
 GAA = acid alpha-glucosidase
 Hex4 = hexose tetrasaccharide, also called glucotetrasaccharides
 LDH = lactate dehydrogenase