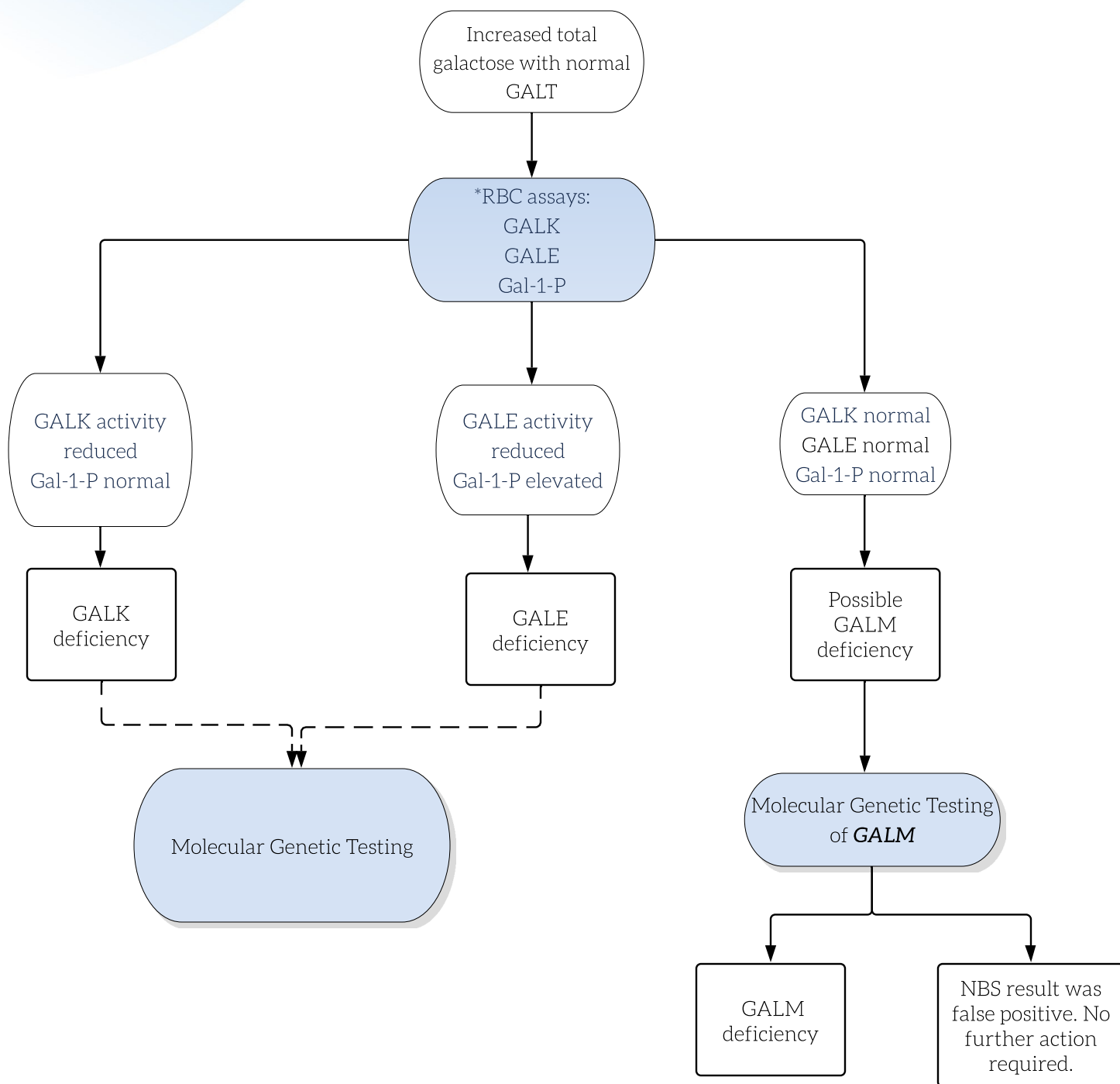


Primary or Secondary Hypergalactosemia (Galactose Elevated)



Key

- Actions are shown in shaded ovals; results are in the unshaded ovals. Diagnostic outcomes are shown in boxes.
- Dashed line reflects an optional test.
- * Transfusions may invalidate the results of the RBC enzyme assays (circa 90 days).

Abbreviations

Gal-1-P = galactose-1-phosphate
 GALE = UDP-galactose-4-epimerase
 GALK = Galactokinase
 GALT = Galactose mutarotase
 GALT = galactose-1-phosphate uridyl transferase
 RBC = red blood cell