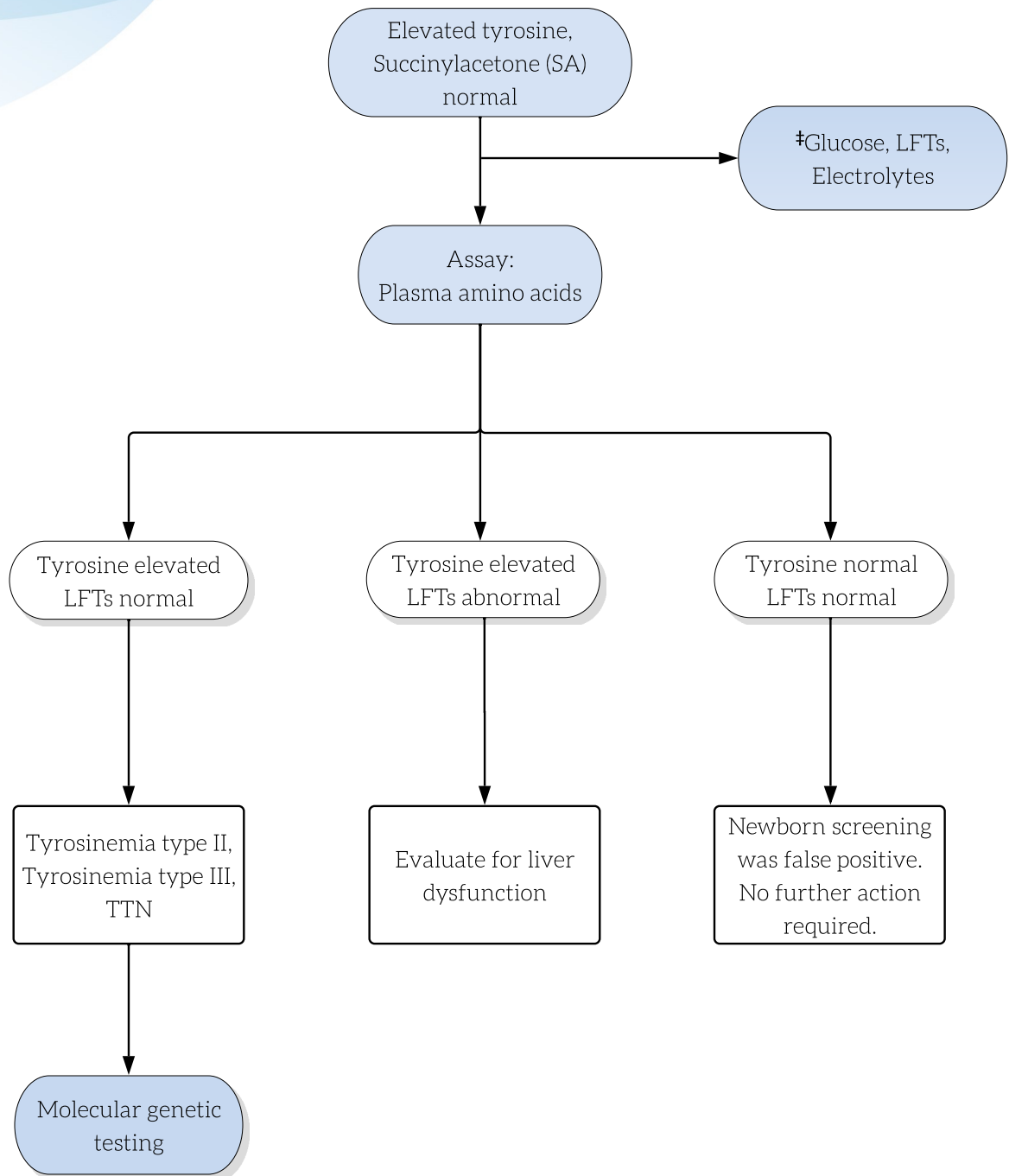


Tyrosine Elevated, Succinylacetone Normal



Key

Actions are shown in shaded ovals; results are in the unshaded ovals.

Diagnostic outcomes in boxes.

†May be performed locally as a rapid primary screen to assess severity.

Abbreviations

LFTs = Liver function tests

TTN = Transient tyrosinemia of the newborn