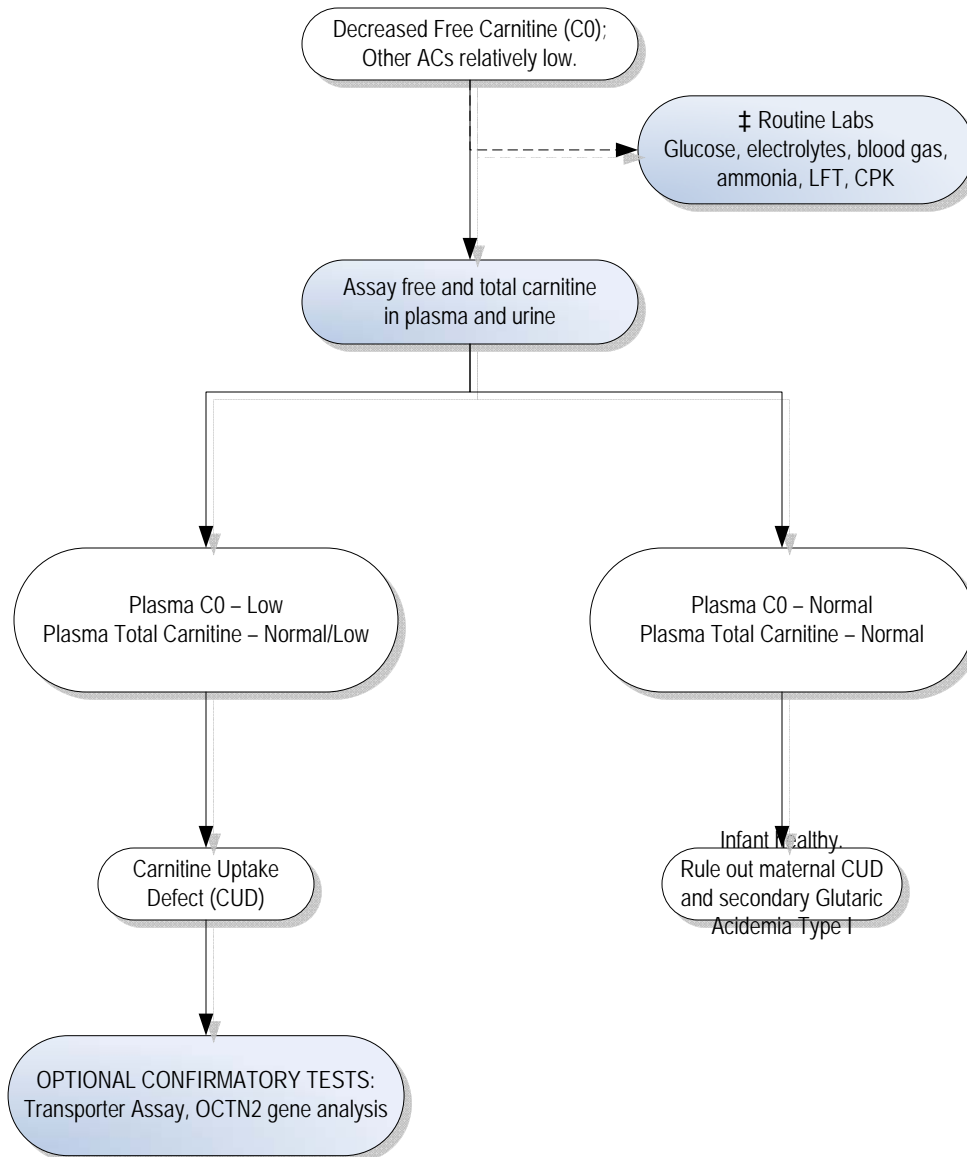


CO (Free Carnitine) Low



Abbreviations/Key:

AC = acylcarnitine
 CPK = creatine phosphokinase
 CUD = carnitine uptake disorder
 LFTs = liver function tests
 OCTN2 = organic cation transporter 2

‡ - When the positive predictive value of screening is sufficiently high and the infant is symptomatic, some initiate diagnostic studies that are locally available at the same time as confirmation of the screening result is done.

Actions are shown in shaded boxes; results are in the unshaded boxes.

Disclaimer: These standards and guidelines are designed primarily as an educational resource for physicians to help them provide quality clinical services. Adherence to these standards and guidelines does not necessarily ensure a successful medical outcome. These standards and guidelines should not be considered inclusive of all proper procedures and tests or exclusive of other procedures and tests that are reasonably directed to obtaining the same results. In determining the propriety of any specific procedure or test, the healthcare provider should apply his or her own professional judgment to the specific clinical circumstances presented by the individual patient or specimen. It may be prudent, however, to document in the patient's record the rationale for any significant deviation from these standards and guidelines.