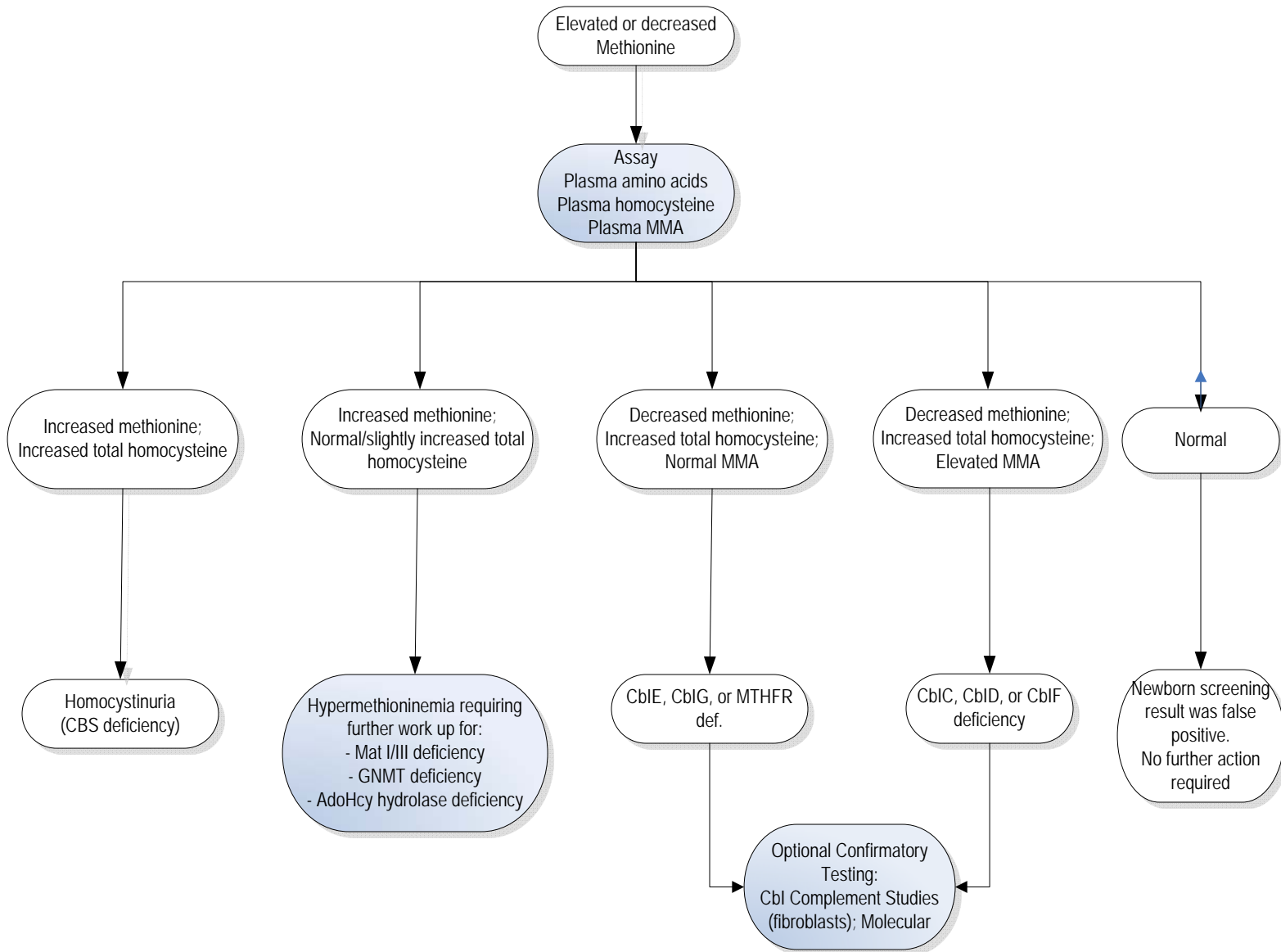




# Methionine Elevated or Decreased



Action steps are shown in shaded boxes; results are in the unshaded boxes.

## Abbreviations/Key

AdoHcy hydrolase = Adenosylhomocysteine hydrolase

Cbl = cobalamin

CBS = Cystathionine  $\beta$ -synthase

GNMT = glycine N-methyltransferase

Mat = Methyladenosyltransferase

MMA = Methylmalonic Acidemia

MTHFR def = Methylene Tetrahydrofolate Reductase Deficiency

**Disclaimer:** This guideline is designed primarily as an educational resource for clinicians to help them provide quality medical care. It should not be considered inclusive of all proper procedures and tests or exclusive of other procedures and tests that are reasonably directed to obtaining the same results. Adherence to this guideline does not necessarily ensure a successful medical outcome. In determining the propriety of any specific procedure or test, the clinician should apply his or her own professional judgment to the specific clinical circumstances presented by the individual patient or specimen. Clinicians are encouraged to document the reasons for the use of a particular procedure or test, whether or not it is in conformance with this guideline. Clinicians also are advised to take notice of the date this guideline was adopted, and to consider other medical and scientific information that become available after that date.