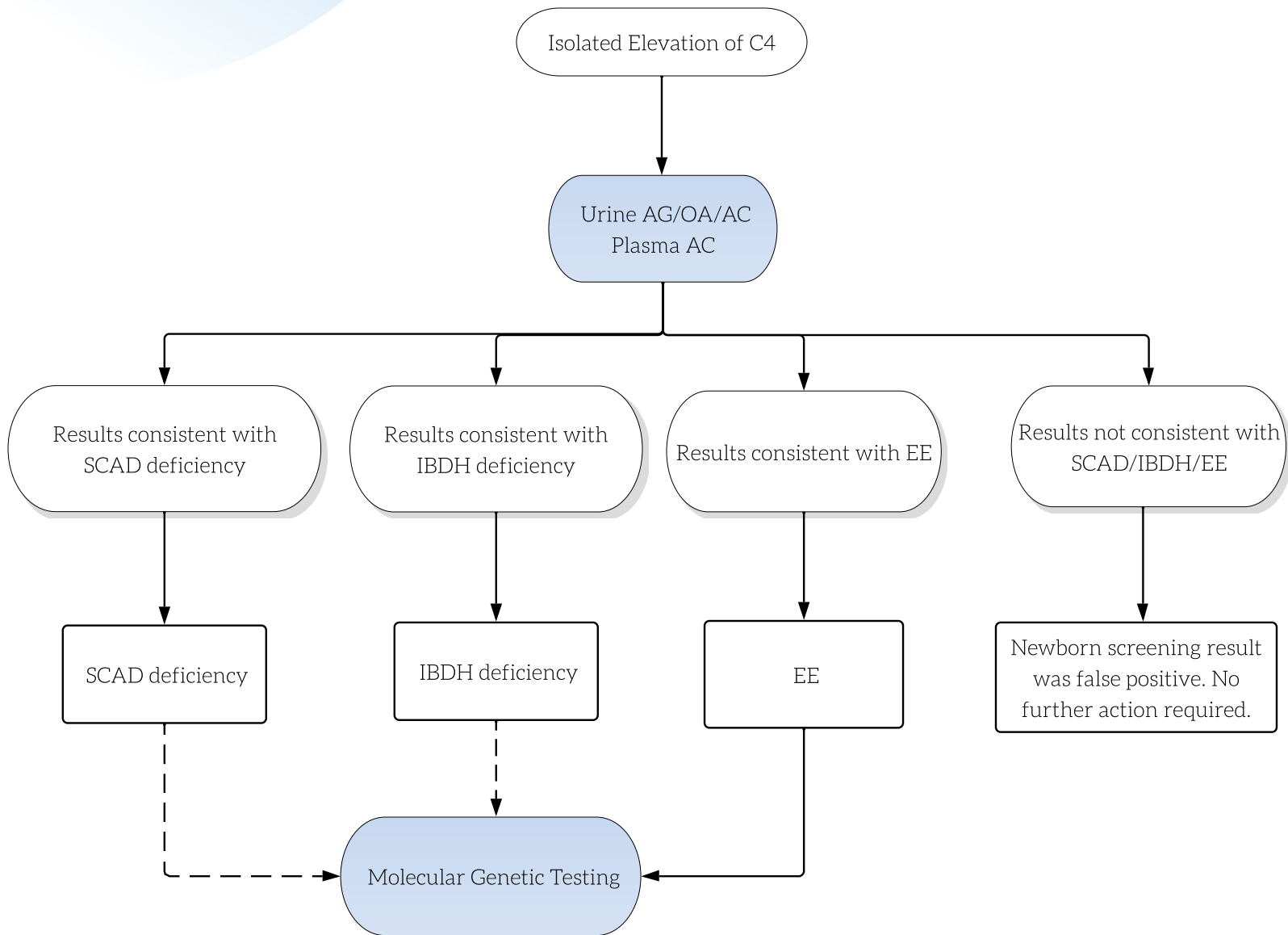


SCAD Deficiency: C4 Elevated



Key

- Actions are shown in shaded ovals; results are in the unshaded ovals. Diagnostic outcomes in boxes.
- Dashed line reflects an optional test.

Abbreviations

AC = acylcarnitines
 AG = acylglycines
 EE = ethylmalonic encephalopathy
 IBDH = isobutyryl-CoA dehydrogenase
 OA = organic acids
 SCAD = short chain acyl-CoA dehydrogenase